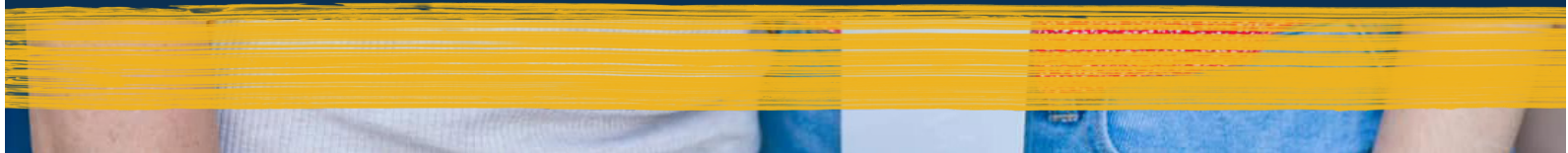




WOLFPACK FAMILY GUIDE





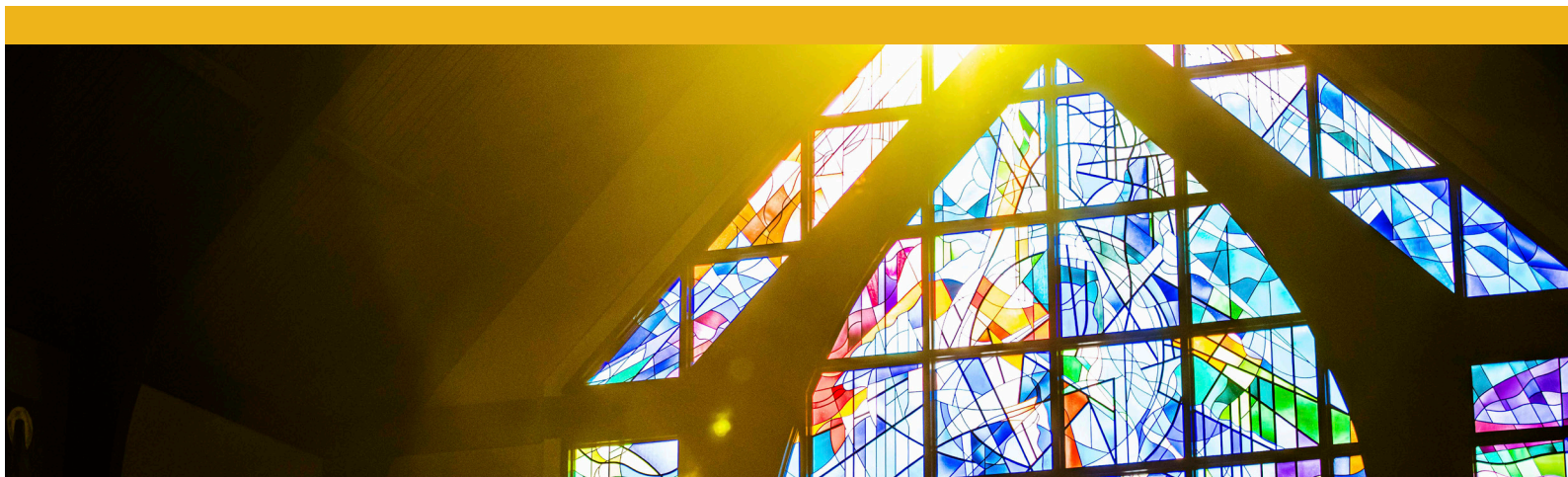
We know it's not just the student who is on the journey...

A new stage of someone's personal journey can be overwhelming, yet it can also be one of excitement and opportunity. After accompanying many students at FranU, we know that students who have a strong support system have a higher likelihood of success.

FranU experiences are extraordinarily relationship-based, which is a foundational aspect of a Franciscan education. In that spirit, we welcome you, parents and family members, to our Franciscan family!

TABLE OF CONTENTS

Mission & Core Values	4	Community Life	18
New Student Checklist	5	Dining	
Enrollment Services	6	OLOLRMC Fitness Center	
Financial Aid	7	Housing	
Registrar	8	Study/Social Spaces	
Bursar	9	Enjoy the Capital City	
Tips to support my student: A letter from FranU's Provost	10	Campus Federal Credit Union	
St. Francis Hall	11	How can I support my student who may be going into a clinical program?	19
Student Affairs	12	Campus Safety	21
Academic Support Services	13	Commonly Asked Questions	22
Career & Vocation Services	14	FranU Directory	23
Student Advocacy			
Franciscan Student Life	15		
Counseling Services	16		
Disability Services	17		
Health & Wellness			





FRANCISCAN MISSIONARIES OF OUR LADY UNIVERSITY

The mission of Franciscan Missionaries of Our Lady University is to educate and form Franciscan servant leaders of all faiths.

We honor and preserve the legacy of our founders by preparing highly skilled professionals, integrated thinkers, and faith-filled citizens.

Inspired by the Franciscan Missionaries of Our Lady to be a living witness to Jesus Christ and the Gospel message, the University is in communion with the teachings of the Catholic Church.





YOU'RE ADMITTED...WHAT'S NEXT?

No matter where you are in the process of officially becoming a FranU wolf, there are always opportunities to learn more about FranU and connect with the campus community! Learn more about any of the activities and moments to connect by visiting www.franu.edu/experience or by checking your personal emails.

NEW FRANU STUDENT CHECKLIST

Most of our communication will be sent via email. Therefore, it is imperative that all new students continuously check their emails for important updates and announcements!

Complete your FAFSA
 Visit franu.edu/financialaid and follow the steps to complete your FAFSA for the upcoming academic year.

Double-check all financial aid needs
 Log in to MyPortal and check for any financial aid needs through Wolftracks to complete your processing.

ADA accommodations
 Log in to MyPortal and visit the Student Affairs page to learn about submitting documentation for any accommodations per the American Disabilities Act.

Submit your immunization records
 Log in to your applicant portal and submit your most updated immunization records.

Plan your tuition & fee payments
 Log in to MyPortal and visit Wolftracks to plan ahead for tuition and fee payments or to set up a payment plan. Make sure to mark your calendar for deadlines!

Mark your calendar
 Review the academic calendar and your FranU emails to continuously be informed of important dates and campus events.

Schedule an advising appointment
 Check your email for a link to schedule an academic advising appointment.

Parking tag and Student ID's
 Prior to orientation, refer to your orientation confirmation email or the orientation website to submit your parking tag form and student ID picture.

Explore housing options
 Need housing options? Visit housing.franu.edu to explore area housing options and find potential roommates.

Register for orientation
 After scheduling your advising appointment, visit franu.edu/orientation to register for new student orientation.

Request FINAL official transcripts
 FINAL OFFICIAL transcripts mean no "in-progress" grades and a high school or college graduation date if a degree is earned.

Follow our social media
 Follow our social media accounts for updates!

@franubr

Enrollment Services

Enrollment services is your student's first point of contact with FranU and that relationship will continue long after your student walks across the graduation stage.

Our team within the enrollment services area is here to assist your student with any needs from completing their admission process, to completing their FASFA, and much more. These offices work collaboratively to ensure your student's enrollment details, including financial status are all readily available.

The offices that comprise our enrollment services include Admissions, Bursar, Financial Aid, and Registrar.

KEY TERMS

MYPORTAL

myportal.franu.edu

is a student's one-stop-shop for information related to all things FranU, including their campus email, university announcements, Moodle, and other important links. Your student will log into MyPortal for the majority of their needs.

WOLFTRACKS

is an online platform that assists in all enrollment services processes. This includes registering for classes, paying tuition and fees, financial aid processing, plus much more! Wolftracks can be found in the student's MyPortal.



Office of Financial Aid

With the ongoing increases in the cost of higher education, we know that acquiring financial assistance is often a necessity. Our financial aid team is here to help your student navigate the process and answer all your questions!

This department serves your student by assisting them through the FAFSA process (including TOPS, grants, and loans), overseeing institutional scholarships, offering educational opportunities for financial literacy, VA benefits, and addressing any other questions.

KEY TIPS TO HELP YOUR STUDENT

You must complete a FAFSA every year using the instructions on our financial aid website.

Complete the FAFSA as soon as possible as there is aid offered on a first-come-first-serve basis.

All aid must be accepted or declined in Wolftracks for it to be applied to your fee bill.

Encourage your student to pay attention to their FranU email as that is the primary way of communication.



Financial Literacy

FranU offers opportunities to educate your student on how to manage personal finances to meet their goals by tackling the financial challenges of modern life. Encourage your student to take advantage of these opportunities by visiting the financial aid website and participating in events and seminars on campus!

CashCourse: Your Real-Life Money Guide

FranU students have free access to an online financial education resource designed specifically for university students. These resources are divided into six main topics including: **earning, saving and investing, protecting resources, manage spending, borrowing, and paying for your education.**

Your student can access CashCourse by visiting the Financial Aid website and clicking on the “Financial Literacy” tab.

franu.edu/financialaid
225-526-1714
financial.aid@franu.edu

Office of the Registrar

The Office of the Registrar is the base of operations for all student record maintenance, course registration and grade tracking. Our team can assist your student with anything regarding the following items:

Student demographic changes

Enrollment verifications

Program/Major changes

Official transcript request

Processing FERPA waivers

KEY TIPS TO HELP YOUR STUDENT

Keep your student's contact information current so items like reimbursement checks can be mailed accurately.

Complete a FERPA form for anyone other than your student to access their student record.

Become familiar with the academic catalog and calendar for academic policies and important dates

FERPA - Family Educational Rights and Privacy Act of 1974

FERPA is federal law that protects the rights of the student and ensures the privacy and accuracy of education records.

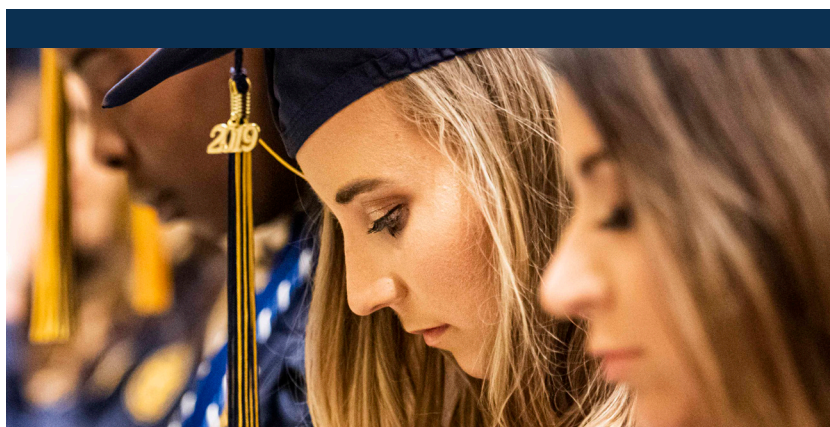
We understand the adjustment; however, under FERPA, parents or guardians have no inherent right to access their student's educational records, including financial aid and tuition statements, unless granted in writing by the student.

To complete a Non-Directory Information Release form, your student should visit the forms tab within the Registrar website.

Academic Calendar

The academic calendar lists all the important dates your student needs to be aware of during the academic year. This includes registration dates, major exam times, add/drop dates, and other academically related functions.

Your student can find the academic calendar under MyResources & Links in MyPortal.



franu.edu/registrar
225-526-1764
registrar@franu.edu

Office of the Bursar

The Office of the Bursar facilitates and manages all financial transactions between the student and FranU. This office is ready to assist with any questions regarding tuition and fee payments.



When are tuition and fee bills sent?

Tuition and fee bills are accessed through Wolftracks immediately after your student registers for classes. Billing statements include an itemized listing of tuition and fees owed for that semester.

When are tuition and fee bills due?

The academic calendar is your primary source for important university dates, including when tuition and fee bills are due. If there are any issues with having your bills taken care of before the deadline, please make sure to contact the Office of the Bursar!

What is due by the deadline?

If you do not plan on paying any balances in full by the deadline, then you must be enrolled in a payment plan. Also, any financial aid must be either accepted or declined through Wolftracks in order to see an anticipated credit on your fee bill.

If payment arrangements are not made by the deadline, your student's course(s) could potentially be purged, which means they will no longer be enrolled in courses.

How do I make a payment?

Payments can be made in the form of cash, card, check, and/or money orders. Card payments can be made through Wolftracks. Any other form of payment should be done in person. Payment plans can be processed through Wolftracks in "Payments and Billing".

fran.edu/bursar
225-526-1990
bursar@fran.edu

FRANU FAMILY MEMBERS,

We are so thrilled that a part of your family is now becoming a part of ours at FranU! Our faculty, staff, and administrators are primed to help facilitate your loved one's education and formation into Franciscan servant leaders all within an environment immersed in mission-based values and traditions.

Knowing the countless ways you have helped your loved ones get to this point in their journey, I'd like to share some keys towards success that we stress upon our students and that you in your roles can help reinforce. These hints are not only known to work but also at their core tie into the relational aspects of a Franciscan education.

Let's engage outside of class. Research indicates that students with higher levels of engagement in both curricular and co-curricular activities are more academically successful. While it may be intimidating to schedule a one-on-one session with faculty members, please know they are prepared for it! On the co-curricular side, getting involved in our student organizations from the start allows students to quickly develop relationships with peers while also engaging in activities that typically will further help with your vocational discernment.

Attending class still matters. The pandemic has led to more leniency when it comes to some class attendance policies. While students who miss class can often quickly gain access to notes, lectures and recordings, the experience of sitting in the physical classroom provides levels of context to the material that has been shown to dramatically improve retention of knowledge and the feeling of inclusion--both vitally important to academic success.

There will be stumbles. Acknowledge, Reflect and Take Action. We know students are not going to ace every quiz or paper and we do not expect them to. But if they stumble, we also do not want that event to spark denial, disengagement or anxiousness. Instead, we want them to take positive steps like:

extensively reviewing their work and the faculty's feedback

reflecting upon their preparations and time management

taking positive action by reaching out to get the help they need right away

Ask your student about their FranU experiences.

In this day and age family sit-downs for dinner and discussion about the day's events seem difficult for many of us. If this is not your reality, then find a new way to regularly ask and listen about your student's successes as well as their stumbles at FranU. Having that constant familiar presence in their life while they pursue their career aspirations is a fantastic way to seek counsel and support from those who know and love them best.

Welcome to FranU!

Dr. Brian Rash, Ph.D.

Provost & Vice President of Academic Affairs



Brian Rash



Our brand new signature building, St. Francis Hall, has been a dream come true to provide our students with a common area suitable for building community and academic support. This 75,000 sq. foot cornerstone of campus provides many services and opportunities to connect, such as...

CLASSROOMS that are modular to accommodate small classes to large events,

THE CAFE for students to purchase snacks, drinks, coffee, and socialize between classes,

STUDENT SUPPORT SERVICES that include all services related to areas of enrollment management and student affairs,

CONFERENCE ROOMS that can be reserved for group studying or meetings during building hours,

LIBRARY SERVICES where students can utilize the study spaces, computer and printing stations, and all the services our library has to offer,

SIMULATED ENVIRONMENT TEACHING HOSPITAL which is around 20,000 sq. ft. of simulation space devoted to unique experiences and technology for clinical education,

LEARNING RESOURCE AND TESTING CENTER where students can receive free tutoring for a number of subjects and receive accommodated testing,

in addition to many other spaces that support your student both socially and academically!

St. Francis Hall

MOVING TOWARDS A UNIFIED CAMPUS

Student Affairs

LEARNING BEYOND THE CLASSROOM

At FRANU, your student's education goes beyond the four walls of a classroom. We aim to holistically educate and form our students into integrated thinkers, faith-filled citizens, and highly skilled professionals. Their college experience will undoubtedly influence their ability to thrive both personally and professionally.

The Division of Student Affairs offers a variety of resources and support that encompasses the talents, skills, and passions of our dedicated staff and student leaders. This includes Campus Ministry, Vocational Discernment & Career Development, Counseling & Disability Services, Health and Wellness, Academic Support Services, and Franciscan Student Life (including student organizations). We aim to provide a rewarding and fulfilling college experience for our students that encourages their involvement both within and beyond the classroom. Their ability to engage in both settings will cultivate the skills necessary to be effective communicators, community advocates, and servant leaders.

KEY TIPS TO SUPPORT YOUR STUDENT

Encourage them to **GET INVOLVED** on campus. They are more likely to have a more impactful and positive experience when they engage in activities beyond the classroom.

Encourage them to **HAVE FUN!!** Their college experience will be filled with academic rigor that challenges them to tap into strengths they are still discovering. Learning to enjoy the process will develop the perfect mixture of resilience and joyfulness of spirit.

Encourage them to **CONNECT** with their peers. As students learn how to engage and collaborate with others, they develop long-lasting relationships that will support their success both academically and professionally.

We are excited to partner with you in the overall formation of your student and are here to support you in any way that we can! For more information regarding any of our departments or programs, please feel free to contact us at studentaffairs@franu.edu.

Best Wishes!

Esther Penns, MPA
Chief Student Affairs Officer



Academic Support Services

Academic Support Services includes two key areas that are solely focused on your student's academic and overall success at FranU: **The Office of Advising** and the **Learning Resource Center**.

ACADEMIC ADVISING

is your student's first major step when beginning their academic journey at FranU. The Office of Advising provides the appropriate curriculum for your student's program of choice, schedules a healthy but manageable course load, shares resources that will help along the way, and answers all questions so that your student is adequately prepared for the first semester and beyond. We are also diligent about establishing the advisor-advisee relationship so that your student knows they are not alone on this journey. We strive to make the Office of Advising the one-stop-shop where your student can obtain information about our programs and campus, find resources, and be directed to the appropriate area if there is a need beyond our scope.

THE LEARNING RESOURCE CENTER

is your student's academic support superstation! We offer academic coaching and tutoring services in both undergraduate and graduate courses. Our tutors include dedicated faculty members who aim to support students both within and outside of the classroom, professional staff members who provide their support as subject matter experts, and peer tutors who have demonstrated academic mastery in various subject areas.

The LRC also features:

A state-of-the-art testing center for small and large-scale testing, which includes individual testing stations, and computers at each station for online testing.

Individual study rooms for single-student or group studying, equipped with computers and large, wall-mounted monitors.

A large study area equipped with a dry-erase board for small groups, large groups, or entire classes.

Here is where you come in. Your student(s) will have resources available to them, and we will communicate with them through multiple means to take advantage of those resources. We ask that you partner with us in encouraging your student to take advantage of the resources we provide. Having that encouragement from home, in addition to the encouragement from us here at the university, might be exactly what your student needs to feel motivated to use the resources. We do not want any student to miss out on valuable, and in some cases, critical resources.

Let's work together to make sure our student stays on the path to degree completion!

Vocational Discernment & Career Development

The Office of Vocational Discernment & Career Development provides opportunities for one-on-one guidance for students discerning their calling, career planning and connecting students with employers for internship and future employment opportunities.

Vocation & Career Consultations
Cover Letter & Resume Review
Annual Career Events

Career Assessments & Development Workshops
Mock Interviews and Fashion Shows
Career Library

Handshake

As a part of the FranU community, your student automatically has access to Handshake, which is an online platform that performs many functions to assist with career development. This includes **applying for full-time or part-time jobs,**

connecting with potential employers, providing career and network tips and tricks, and more!



Every student will receive an email at the beginning of the semester to activate their account and log in to complete their profile, so please encourage your student to do so!

Student Advocacy

Life is so full of surprises...and some of them are unwelcome! We do not want outside stressors to negatively impact your student's academic performance and experience on campus. The following are resources to assist your student when the unexpected happens:

FRANU FOOD PANTRY

The FranU food pantry is a confidential setting for students to access non-perishable food items, school supplies, hygiene products, recipes, and other items to make sure your own pantry is stocked at home! Items are collected through donations and are completely free to students.

The food pantry is open during regular office hours.

ST. FRANCIS EMERGENCY FUND (SFEF)

The SFEF provides assistance to students who have encountered an unforeseen emergency. Funds may be used for, but are not limited to, medical emergencies, loss of employment, critical care or home repairs, and other unforeseen situations.

To learn about other criteria and considerations about the SFEF, click the Student Advocacy link in the Student Affairs MyPortal page.

Franciscan Student Life & Servant Leadership

The Office of Franciscan Student Life & Servant Leadership fosters student engagement from a holistic view of the person. We provide opportunities for students to connect socially and spiritually, cultivate meaningful relationships, provide a true college experience, develop themselves through servant leadership, and grow in their relationship with Jesus Christ.

STUDENT CONNECTIONS & ENGAGEMENT

By creating meaningful connections, your student can have the best experience possible while facilitating success inside and outside of the classroom. We have opportunities for your student to get involved within student organizations, campus events, and mentorship. We want your student to create memories and connections with our campus so they feel they are a special part of this community.

SERVANT LEADERSHIP DEVELOPMENT

The FranU difference is the way in which we focus our attention on developing your student as a highly-skilled professional, an integrated thinker, and a faith-filled citizen. Through our Franciscan Peer Leader program, the Franciscan Experience Summer Institute, and other leadership development opportunities, your student can challenge themselves, practice their skills, and participate in deep reflection to become well-rounded human beings.

CAMPUS MINISTRY

As a Catholic, Franciscan university, we are proud to offer opportunities for students of all faiths to engage in their relationship with Jesus Christ. We do this through social events, celebrating the liturgy, spiritual development offerings, participating in the Diocese of Baton Rouge Young Adult events, and more!



▲ Annual Crawfish Boil



▲ Oktoberfest



▲ Welcome Week



▲ Service in the Community



▲ Liturgical and Spiritual Events

Counseling & Disability Services

FranU offers individual counseling services including support and assessment for your student's mental health needs to lead them towards personal and academic flourishing.

What is the role of counseling for your child in higher education? How can you encourage help-seeking behavior from them before they end up in crisis?

If you're a family member of a college-aged student, you know that **students today have higher rates of depression, anxiety and other mental health disorders**. Between 2020 and 2021, more than 60% of college students "met criteria for one or more mental health problems, a nearly 50% increase from 2013" (Journal of Affective Disorders, June 2022).

When students have mental health challenges, family members often feel overwhelmed and unsure about where to start to help make things better. **Awareness and treatment** are essential to preventing crises that result in failing classes, dropping out, or severe emotional issues. **Keeping lines of communication open** is very important. Talk with your student about mental health and let them know that if they find themselves struggling, they are not alone. This will help your student to feel comfortable that they can come to you with any problems they may experience without fear of being judged.

Understand that challenges are inevitable, and in many cases it's necessary! A psychologist and director of the Counseling Center at Hamilton College stated, "We love our kids deeply so we want to remove their struggle and pain, especially when we see pitfalls and consequences. But struggling is how they learn." **Empowering them to seek out counseling services** when a struggle arises rather than trying to "fix" the problem, will set them up for an experience of advocating for themselves!

All students, particularly those who have already experienced mental health issues, should **have a plan in place** in case things get too difficult to handle. Having a solid plan in place will make it easier for your student to obtain mental health services should they become necessary. You may already encourage your student to eat a healthy diet, get adequate sleep and exercise regularly to maintain their physical strength. Let them know that paying attention to their emotional well-being is also a sign of strength.



L. Thornburg, LPC

Best wishes for a fantastic year!

Laine Thornburg, LPC

Director of Counseling

Counseling & Disability Services

DISABILITY SERVICES

FranU is in compliance with the 1973 Rehabilitation Act, the 1990 Americans with Disabilities Act (ADA) and the 2008 Americans with Disabilities Act Amendment Act (ADAAA).

If your student requires any type of accommodations, then they must register with Student Affairs. Proper documentation will be required, including a doctor's diagnosis, to ensure your student receives appropriate accommodations. All required forms are available in MyPortal under Student Affairs. For any questions, you can contact our Office of Counseling and Disability Services.

Health and Wellness

The Office of Health and Wellness assists in promoting optimal wellness, maintains student health records, and ensures student compliance with immunizations and clinical student health requirements, plus more!

TOTAL OCCUPATIONAL MEDICINE provides health services to FranU students at discounted rates.

RX ONE PHARMACY provides discounted non-prescription drugs to students by presenting their student ID. This pharmacy is located in the lobby of the OLOLRMC Medical Plaza II (across the street from the School of Nursing building).

PRIMARY CARE SERVICES connect students with a healthcare provider in the Baton Rouge area. Students can call 225-526-1923.

LAKE LINE DIRECT is a free 24-hour nurse advice hotline through the Our Lady of the Lake Regional Medical Center. Students can call 765-LAKE (5253) or toll free at 1-877-765-5253.

LAKE HEALTH CENTER is a fitness center located across the street from the School of Nursing building in the OLOLRMC Medical Plaza II on Hennessy Blvd. The fitness center is open from 6AM until 9PM and students can receive discounted memberships.

For more information regarding vaccine requirements and health resources, please contact healthandwellness@franu.edu.



Community Life

DINING: From enjoying a snack or a professionally prepared meal in The Den, the cafeteria and other food chains at Our Lady of the Lake Regional Medical Center, or shopping/food centers surrounding the Health Center District, your student has plenty of options to grab some food, drink, or coffee while also enjoying spaces to hang out with new friends!

LOLRMC FITNESS CENTER: This 24/7 Fitness Center is open to FranU faculty, staff, and students for \$75/semester. It is located on the second floor of the Medical Plaza and students can join by bringing your student ID and requesting a membership.

HOUSING: Looking for a place to live? FranU has a resource to help with that! Visit housing.franu.edu to see local apartment options and possibly find your future roommate(s)!

STUDY/SOCIAL SPACES: All of our buildings collectively have spaces to hang out, do some homework in between classes, grab a snack, etc. St. Francis Hall includes most of our study spaces, including the library, The Den, and places to hang out!

ENJOY THE CAPITAL CITY!: Your student can also take advantage of all that Baton Rouge has to offer! Some great resources are www.225batonrouge.com and www.visitbatonrouge.com to check out events, festivals, restaurants, outdoor events, hiking trails, and other exciting things to be immersed in the culture and life of the capital city!

CAMPUS FEDERAL CREDIT UNION: FranU is proud to be a partner with Campus Federal Credit Union, which is a full-service financial institution that your student is eligible to join. Learn about all the benefits of being a member of Campus Federal by visiting campusfederal.org.

How can I support my student who may be going into a **CLINICAL PROGRAM?**

Preparing for a career in healthcare can be overwhelming. Successful students usually receive a great deal of support from family and friends when they are going through their clinical programs. Here are some things you can do to help your student make a successful transition.

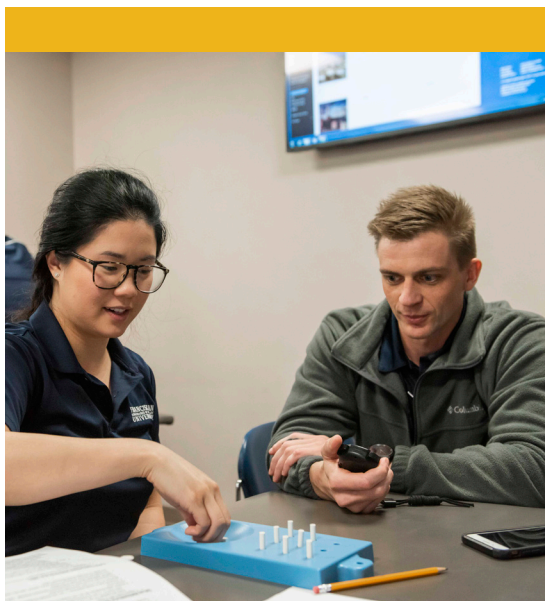


Ask your student about their school calendar.

Clinical programs take a lot of time. For example, students typically spend 3-4 hours per week for every class they take in the classroom, but their lab and clinical experiences will often last 8 hours or more. Managing time becomes very important. Support your student by asking when their classes, exams, lab experiences, and clinicals are. Some families create a master calendar that includes both major family and school-related events to help with planning.

Talk about the changes happening in your student's life.

Clear communication is essential. Students have a life and responsibilities outside of school. This is a good time to set priorities and clear responsibilities. Clarify expectations before clinicals start and set a plan that will work for everyone. Remember that this time in your student's life is temporary. Although they may not have time to help out as much at home or they may not be able to attend a family vacation, wedding, or holiday meal right now, they will be able to once they have completed school.



Identify a dedicated study space.

We are creatures of habit and we all study in different ways. It is important for your student to find a space that is dedicated for studying. Whenever your student is in that space, do not interrupt them unless it is an emergency. The best study spaces are free from distractions and have space and good lighting.

Take a deep breath, schedule some time to have fun, and keep the end goal in mind.

Despite busy schedules, every student needs to have fun. If your student is starting to feel overwhelmed, it might be a good time to suggest that you do something fun and relaxing, even if it is only for 10-15 minutes. Likewise, remember that finishing this clinical program is the goal. Do whatever you can to help your student see progress toward that goal. For example, encourage your student to create a task list and cross off the tasks as they are completed. Make a list of required courses and put a big star on them when they are done.

This is an exciting time for you and your student. Learning, especially in a clinical environment, can be very intense. Whenever we learn and experience new things, we will make mistakes and plans will not always unfold as anticipated. The best thing you can do is surround your student with love and support. Anticipate and celebrate the successes and help support your student as they recover from their mistakes. Stay connected and check in with your student regularly. Listen to their concerns, empathize with them, and remind them of all the resources they can access. Completing a clinical course of study is tough but it is so rewarding.

Thank you for all you do to support your student and for helping them successfully launch into their new profession!



Dr. Amy Hall, Ph.D., RN, CNE
Dean, School of Nursing

Amy M. Hall Ph.D., RN, CNE



Campus Safety

Niche.com has selected FranU as the safest college campus in Louisiana for 2023, and we are proud to offer your student a safe experience during their time on campus.

Extra-Duty Baton Rouge Police Officers

The FranU campus is patrolled by uniformed Baton Rouge Police Officers and are on campus while any building is open. Your student can find them in marked BRPD patrol cars around campus.

OLOLRMC Lake Security

Lake Security provides security personnel for Our Lady of the Lake Regional Medical Center, and they also serve your student for non-urgent needs. Your student can contact Lake Security for things such as security escorts, parking issues, or any other non-threatening needs.

RAVE: Emergency Alert Messaging System

RAVE is an immediate phone call, text message, and email for sudden emergencies that impact the campus. It is very important that your student keep their contact information up to date through the Office of the Registrar so these notifications are delivered to the correct contact.

Emergency Contacts

In case of emergency	911
Extra-Duty Baton Rouge Police	225-202-7890
OLOLRMC Lake Security	225-765-8825



Commonly Asked Questions

What are the immunization requirements?

Proof of 2 MMR (Measles, Mumps, & Rubella) vaccines, current tetanus and diphtheria (TD) vaccine (within the past 10 years, Meningitis, and COVID-19 must be submitted through your students admitted student portal before beginning classes.

Does FranU accept immunization waivers?

Your student may claim exemption for medical, personal, or religious reasons. There may be additional documentation required. More information can be found in the immunizations section on your student's admitted student portal.

Can my student hold a job during school?

This answer varies greatly depending on what type of program your student is enrolled in. If the job site is flexible, then it's possible. However, we highly recommend your student speak with their academic advisor so they can advise based on their particular context.

Why can't I discuss my student's account if I'm the one paying the fee bill?

The Family Education Rights & Privacy Act of 1974 mandates that information contained in a student's education record must be kept confidential, even from the parent or legal guardian. Your student would need to complete a Non-Directory Information Release form granting you permission to access their record.

Where can my student buy textbooks?

Your student can find their textbooks using our virtual bookstore, which can be found in MyPortal. After logging into MyPortal, scroll to the MyResources and Links section and there will be a link titled "Virtual Bookstore".

How much does TOPS cover at FranU for Louisiana students?

TOPS award amounts at FranU are based on the weighted average of tuition at comparable public schools. The semester award amounts are as follows:

Opportunity Award: \$2,859

Performance Award: \$3,059 (\$2,859 + \$200 stipend)

Honors Award: \$3,259 (\$2,859 + \$400 stipend)



FranU Directory

FranU Main Line franu.edu	225-526-1700	Academic Advising	225-526-1620
Office of the President	225-526-1710	Vocation & Career	225-526-1721
Academic Affairs	225-526-1761	Counseling	225-526-1724
Student Affairs	225-526-1620	Campus Ministry	225-526-1713
School of Nursing	225-526-1750	Health & Wellness	225-526-1636
School of Health Professions	225-526-1738	Franciscan Student Life	225-526-1694
School of Arts & Sciences	225-526-1768	Learning Resource Center	225-526-1669
Admissions	225-526-1631	Library	225-526-1730
Registrar	225-526-1764	Technology Services	225-526-3726
Bursar	225-526-1990		
Financial Aid	225-526-1977		





FRANCISCAN
MISSIONARIES OF OUR LADY
UNIVERSITY